



The BCAM infrared camera offers a non-invasive means of monitoring and diagnosing the conditions of buildings – providing immediate high-resolution thermal imagery, revealing potential structural and moisture issues, energy efficiency and even rodent or pest discovery.



- > Ultra-compact & Affordable
- > Color Alarm Feature
- > Crisp, High-quality Images
- > Bright 3.5" LCD
- > Built-in Laser LocatIR™
- > JPEG Image Storage
- > Download Images Easily to a PC
- > 7 Hour Battery Operating Time

Find Problems Fast

Monitor and diagnose the condition of buildings quickly and view crisp thermal images on the large 3.5" color LCD. Highlight and analyze problems, store images and document results.

Rugged, Ergonomic & Lightweight

Hold in your hand, clip to your belt or place in your toolbox, the BCAM weighs just 1.25 lbs. It is the lightest IR and thermal imaging storage camera in the world. Dust and splash proof, the BCAM meets IP 54 standards and withstands harsh industrial environments.

Flexible JPEG Image Storage

Store and recall JPEG images in the camera's on-board memory. Recall, analyze and share your findings with others in the field using the camera's LCD.

Pinpoint Problems with Precision

The built-in Laser LocatIR™ quickly helps you associate the hot spot on the IR image with the real physical target. This feature greatly enhances the ability to target inconsistencies.

View Sensitive Thermal Images

A maintenance-free, state-of-the-art uncooled FPA infrared detector produces highly sensitive thermal images that allow you to detect subtle temperature variations that can signal moisture content in building materials.

Download and Document

Download thermal images to your PC quickly with QuickView™ software and standard USB cables. Document your findings simply by inserting JPEGs into your favorite word processing programs.

Smart Power Management

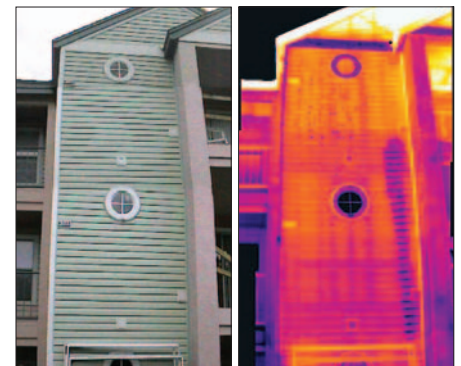
Lightweight, long life Li-Ion battery assures uninterrupted inspections for up to 7 hours on a single charge. BCAM includes an internal battery charger and one battery. Optional car/truck charger and additional batteries are available.

Automatic Color Alarm

The BCAM features an automatic color alarm to quickly alert users to moisture-laden areas during building scans – invaluable to detect potential areas of mold growth, as well as verify when structures are moisture-free during the drying out process.

Fast Detection for Fast Action

Instantly image entire rooms, inspect places that can't be physically reached with moisture meters, reveal wet conditions behind surfaces such as enameled walls and wallpaper that don't readily water stain, track leaks to their source, monitor the drying process, and confirm when a structure is dry.



The thermogram of this vinyl-sided 3-floor apartment building clearly shows the path of a serious leak, completely hidden within the wall, from a washing machine on the third floor.

BCAM™ Technical Specifications

| | |
|--|--|
| Imaging Performance | |
| Field of view/min focus distance | Fixed 25° x 25°/0.3m |
| Thermal sensitivity | < 0.15° C at 25° C |
| Detector type | Focal plane array (FPA) uncooled microbolometer; 120 x 120 pixels |
| Spectral range | 7.5 to 13 µm |
| Image Presentation | |
| Display | 3.5" color LCD, 240 x 240 pixels |
| Video output | MPEG-4 over USB |
| Image controls | Palettes (color, B/W), level, span, auto adjust (continuous/manual) |
| Set-up controls | Date/time, language (English, Spanish), info, LCD intensity (high/normal/low), power down |
| Temperature range | -10° C to +100° C (+14° F to +212° F) |
| Image Storage | |
| Digital storage functions | Store, Delete all images, Delete image, Open |
| Image storage | JPEG Images |
| Laser LocatIR | |
| Classification | Class 2 |
| Type | Semiconductor AlGaInP Diode Laser: 1mW/635 nm (red) |
| Power Source | |
| Battery type | Li-Ion |
| Battery operating time | 7 hours. Display shows battery status |
| Charging system | In camera, AC adapter or 12V from car with optional 12V cable. |
| AC operation | AC adapter 90-360 VAC, 50/60 Hz / 12VDC out |
| Voltage | 11-16 VDC |
| Power saving | Automatic shutdown (user-selectable) |
| Environmental | |
| Operating temperature range | -15° C to +50° C (+5° F to 122° F) |
| Storage temperature range | -20° C to +70° C (-4° F to 158° F) |
| Humidity | Operating and storage 20% to 80%, non-condensing, IEC 359 |
| Water and dust resistant (encapsulation) | IP 54 |
| Shock | 25G, IEC 68-2-29 |
| Vibration | 2G, IEC 68-2-6 |
| Physical Characteristics | |
| Weight | <1.25 lbs. (0.55kg), including battery |
| Size (L x W x H) | 243mm x 81mm x 103mm (9.6" x 3.2" x 4.1") |
| Color | Red |
| Tripod Mounting | Standard, 1/4" - 20 |
| Interfaces | |
| USB | Image transfer to PC |
| Measurement | |
| Measurement modes | One fixed spot, color alarm above or below |

| |
|---|
| BCAM System Includes: |
| IR camera with lens and built-in Laser LocatIR™ |
| Ruggedized transport case |
| Power supply |
| Hand strap |
| Lens cap |
| QuickView™ software |
| USB cable |
| User manual |
| Power cord |
| 1 Battery |
| Training CD |

